

ANNEX L3: PROTECTED OPEN SPACES

The sites listed in this Annex have already been subject to public consultation as a part of the Open Space and Recreation Strategy 2011. Table L3.1 lists all the sites, split into sub-sections on allotments, amenity greenspaces, cemeteries and churchyards, civic spaces, spaces for children and young people, natural and semi-natural green spaces, parks and gardens and outdoor sports facilities. All the sites are mapped by ward, which is indicated in the final column of Table L3.1 to allow cross-referencing.

Table L3.1: Protected Open Spaces

| Site No. | Site Name | Ward |
|-----------------------|-------------------------------------|-----------------|
| Allotments (A) | | |
| A 01 | Auckland Road Allotments | Market |
| A 02 | Baldock Way Allotments | Queen Edith's |
| A 03 | Burnside Allotments | Coleridge |
| A 04 | Dawes Lane Allotments | Cherry Hinton |
| A 05 | Elfleda Road Allotments | Abbey |
| A 06 | Fairfax Road Allotments | Romsey |
| A 07 | Fanshawe Road Allotments | Coleridge |
| A 08 | Foster Road Allotments | Trumpington |
| A 09 | Empty Common Allotments | Trumpington |
| A 10 | Holbrook Road Allotments | Queen Edith's |
| A 11 | Wenvoe Close Allotments and Paddock | Cherry Hinton |
| A 12 | Vinery Road Allotments | Romsey |
| A 13 | New Street Allotments | Abbey |
| A 14 | Nuffield Road Allotments | East Chesterton |
| A 15 | Pakenham Close Allotments | East Chesterton |
| A 16 | Perne Road Allotments | Coleridge |

CAMBRIDGE LOCAL PLAN TOWARDS 2031 – ISSUES AND OPTIONS 2, PART 2
DRAFT FOR DEVELOPMENT PLAN SCRUTINY SUB-COMMITTEE – 13 DECEMBER 2012

| | | |
|----------------------------------|-----------------------------------|-----------------|
| A 17 | Stourbridge Grove Allotments | Romsey |
| A 18 | Bateson Road Allotments | West Chesterton |
| A 21 | Maple Close Allotments | East Chesterton |
| A 22 | Kendal Way Allotments | East Chesterton |
| A 25 | Hawthorn Way Allotments | West Chesterton |
| A 26 | Peverel Road Allotments | Abbey |
| Amenity Green Space (AGS) | | |
| AGS 01 | Blandford Way Play Area | Arbury |
| AGS 02 | Brooks Road Play Area | Romsey |
| AGS 04 | Ditton Fields Recreation Ground | Abbey |
| AGS 05 | Donkey Common | Petersfield |
| AGS 06 | Dudley Road Recreation Ground | Abbey |
| AGS 07 | Thorpe Way Play Area | Abbey |
| AGS 08 | Green End Road Recreation Ground | East Chesterton |
| AGS 09 | Montreal Square | Romsey |
| AGS 11 | Scotland Road Recreation Ground | East Chesterton |
| AGS 12 | Peter's Field | Petersfield |
| AGS 13 | Nuttings Road Amenity Green Space | Romsey |
| AGS 14 | Ravensworth Gardens | Petersfield |
| AGS 15 | Brownsfield Recreation Ground | East Chesterton |
| AGS 16 | Campkin Road/St. Kilda Avenue | King's Hedges |
| AGS 18 | Land at End of Moyne Close | King's Hedges |
| AGS 19 | Land West of 43 Ashvale | King's Hedges |
| AGS 20 | Minerva Way Amenity Green Space | King's Hedges |
| AGS 21 | Walker Court Amenity Green Space | King's Hedges |

CAMBRIDGE LOCAL PLAN TOWARDS 2031 – ISSUES AND OPTIONS 2, PART 2
DRAFT FOR DEVELOPMENT PLAN SCRUTINY SUB-COMMITTEE – 13 DECEMBER 2012

| | | |
|--------|--|-----------------|
| AGS 22 | College Fields Amenity Green Spaces | West Chesterton |
| AGS 23 | Southacre Amenity Green Space | Trumpington |
| AGS 25 | Cripps Court, Selwyn College | Newnham |
| AGS 26 | Gonville And Caius (Finella) | Newnham |
| AGS 27 | Ferrars Way Amenity Green Space | Arbury |
| AGS 28 | Harris Road Amenity Green Space | Arbury |
| AGS 29 | Anstey Way Amenity Green Space | Trumpington |
| AGS 30 | Northampton Street Amenity Green Space | Castle |
| AGS 31 | Davy Road Amenity Green Space | Coleridge |
| AGS 32 | Fanshawe Road Amenity Green Space | Coleridge |
| AGS 33 | Silverwood Close Amenity Green Space | Abbey |
| AGS 34 | Staffordshire Gardens Amenity Green Space | Petersfield |
| AGS 35 | Fulbourn Road Amenity Green Space | Cherry Hinton |
| AGS 36 | Amenity Green Space Outside 73-87 Peverel Rd | Abbey |
| AGS 37 | Amenity Green Space Outside 33-47 Peverel Road | Abbey |
| AGS 38 | Rawlyn Road Amenity Green Space | Abbey |
| AGS 39 | Jack Warren Green Large Amenity Open Space | Abbey |
| AGS 40 | Jack Warren Green Small Amenity Green Space | Abbey |
| AGS 41 | Queens Meadow Amenity Green Space | Cherry Hinton |
| AGS 42 | Brooklands Court Amenity Green Space | Trumpington |
| AGS 44 | Mill Road Amenity Green Space | Romsey |
| AGS 45 | Harvey Goodwin Gardens | Arbury |
| AGS 46 | Redfern Close Amenity Green Space | Arbury |
| AGS 47 | Rustat Avenue Amenity Green Space | Coleridge |
| AGS 48 | St Matthew's Gardens | Petersfield |

CAMBRIDGE LOCAL PLAN TOWARDS 2031 – ISSUES AND OPTIONS 2, PART 2
DRAFT FOR DEVELOPMENT PLAN SCRUTINY SUB-COMMITTEE – 13 DECEMBER 2012

| | | |
|--------|--|-----------------|
| AGS 49 | Mulberry Close Amenity Green Space | West Chesterton |
| AGS 50 | The Beeches Amenity Green Space | West Chesterton |
| AGS 51 | Victoria Almshouses Allotments and Amenity Green Space | West Chesterton |
| AGS 52 | Victoria Park | West Chesterton |
| AGS 53 | Fazeley House Amenity Green Space | Petersfield |
| AGS 54 | Pearl Close Large Amenity Green Space | East Chesterton |
| AGS 55 | Faculty of Education | Queen Edith's |
| AGS 56 | Ditton Lane Amenity Green Space | Abbey |
| AGS 57 | Accordia Amenity Green Space | Trumpington |
| AGS 58 | Sherlock Close Amenity Green Space 2 | Castle |
| AGS 59 | Sherlock Close Amenity Green Space 1 | Castle |
| AGS 60 | Westminster College | Castle |
| AGS 61 | Pye Meadow | East Chesterton |
| AGS 62 | The Pightle and Principals Lodge | Newnham |
| AGS 63 | Fison Road Amenity Green Space | Abbey |
| AGS 64 | St Mary's Amenity Green Space | Trumpington |
| AGS 65 | Hanson Court Amenity Green Space | King's Hedges |
| AGS 66 | Hughes Hall Amenity Green Space | Petersfield |
| AGS 67 | Pinehurst | Newnham |
| AGS 68 | Borrowdale Amenity Green Space | Arbury |
| AGS 70 | Carisbrooke Road Amenity Green Space | Castle |
| AGS 71 | Peverel Road Small Amenity Green Space | Abbey |
| AGS 72 | Barnwell Road Amenity Green Space | Abbey |
| AGS 73 | Wadloes Road Amenity Green Space | Abbey |
| AGS 74 | Hampden Gardens | Romsey |

CAMBRIDGE LOCAL PLAN TOWARDS 2031 – ISSUES AND OPTIONS 2, PART 2
DRAFT FOR DEVELOPMENT PLAN SCRUTINY SUB-COMMITTEE – 13 DECEMBER 2012

| | | |
|---|---|-----------------|
| AGS 75 | Whitehill Close Amenity Green Space | Abbey |
| AGS 76 | Tiverton Estate Amenity Green Spaces | Coleridge |
| AGS 77 | St Thomas's Square Amenity Green Spaces | Coleridge |
| AGS 78 | Corrie Road Cut Through | Coleridge |
| AGS 79 | Abbey House | Abbey |
| AGS 80 | Brother's Place Amenity Green Space | Coleridge |
| AGS 81 | Derwent Close Amenity Green Space | Coleridge |
| AGS 82 | Greystoke Road Amenity Green Space | Cherry Hinton |
| AGS 83 | Kelsey Crescent Amenity Green Space | Cherry Hinton |
| AGS 84 | Ditton Fields Amenity Green Space | Abbey |
| AGS 85 | Centre for Mathematical Sciences | Newnham |
| Cemeteries and Churchyards (CEM) | | |
| CEM 01 | Trumpington Church Extension Churchyard | Trumpington |
| CEM 02 | Trumpington Church Cemetery (St Mary & St Michael's Church) | Trumpington |
| CEM 03 | Newmarket Road Cemetery | Abbey |
| CEM 04 | Church End Cemetery (St Andrew's Church) | Cherry Hinton |
| CEM 05 | Histon Road Cemetery | Arbury |
| CEM 06 | Mill Road Cemetery | Petersfield |
| CEM 07 | St Andrews Church Cemetery | East Chesterton |
| CEM 08 | All Souls Lane (Ascension) Cemetery | Castle |
| CEM 09 | St Mary the Less Churchyard | Market |
| CEM 10 | St Giles' Churchyard | Arbury |
| CEM 11 | St Peter's Churchyard | Castle |
| CEM 12 | St Luke's Churchyard | Arbury |
| CEM 13 | Abbey Church (St Andrew-the-less or Barnwell Priory) | Abbey |

| Civic Spaces (CIV) | | |
|---|--|-----------------|
| CIV 01 | War Memorial Square | Abbey |
| CIV 02 | Fisher Square | Market |
| CIV 03 | Market Place | Market |
| CIV 04 | Cambridge Leisure Park | Coleridge |
| Spaces for Children and Young People (CYP) | | |
| CYP 01 | Cameron Road Play Area | King's Hedges |
| CYP 02 | Beales Way Play Area | King's Hedges |
| CYP 03 | Ramsden Square Play Area | King's Hedges |
| CYP 04 | Penarth Place Play Area | Newnham |
| CYP 05 | Play Area Behind 70-78 Hazelwood Close | Arbury |
| CYP 06 | Ainsworth Street Play Area | Petersfield |
| CYP 07 | Ravensworth Gardens Toddler Play Area | Petersfield |
| CYP 08 | Flower Street Play Area | Petersfield |
| CYP 09 | Shenstone Play area | Petersfield |
| CYP 10 | St Thomas' Road Play Area | Coleridge |
| CYP 11 | Gunhild Way Play Area | Queen Edith's |
| CYP 12 | Peverel Road Play Area | Abbey |
| CYP 13 | Reilly Way Play Area | Cherry Hinton |
| CYP 14 | Velos Walk Play Area | Abbey |
| CYP 15 | Albion Yard Children's Play Area | Castle |
| CYP 16 | Arbury Local Centre Play Area | King's Hedges |
| CYP 17 | Bateson Road Play Area | West Chesterton |
| CYP 18 | Hazelwood Close Toddler Play Area | Arbury |
| CYP 19 | Pearl Close Toddler Play Area | East Chesterton |

CAMBRIDGE LOCAL PLAN TOWARDS 2031 – ISSUES AND OPTIONS 2, PART 2
DRAFT FOR DEVELOPMENT PLAN SCRUTINY SUB-COMMITTEE – 13 DECEMBER 2012

| | | |
|--|---|-----------------|
| CYP 20 | Hawkins Road Children's Play Area | King's Hedges |
| CYP 21 | St Matthew's Primary School | Petersfield |
| CYP 22 | Chestnut Grove Recreation Ground | West Chesterton |
| CYP 23 | Ainsdale Children's Play Area | Cherry Hinton |
| CYP 24 | Holbrook Road Children's Play Space | Queen Edith's |
| CYP 25 | Discovery Way Children's Play Space | East Chesterton |
| CYP 26 | Castle School Playground | West Chesterton |
| CYP 27 | Kathleen Elliot Way Children's Play Space | Cherry Hinton |
| CYP 28 | River Lane Play Area | Abbey |
| Natural and Semi-natural Green Spaces (NAT) | | |
| NAT 01 | Bramblefields Local Nature Reserve | East Chesterton |
| NAT 02 | Byron's Pool Local Nature Reserve | Trumpington |
| NAT 03 | Limekiln Close Local Nature Reserve | Cherry Hinton |
| NAT 04 | Logans Meadow Local Nature Reserve | East Chesterton |
| NAT 05 | Paradise Nature Reserve | Newnham |
| NAT 06 | Sheeps Green & Coe Fen | Newnham |
| NAT 07 | Stourbridge Common | Abbey |
| NAT 08 | Barnwell Pit (Lake) | Abbey |
| NAT 09 | Barnwell Junction Pasture and Disused Railway | Abbey |
| NAT 10 | Ditton Meadows | Abbey |
| NAT 11 | Spinney - Blue Circle | Coleridge |
| NAT 12 | Wetland Area (Perse School Playing Fields) | Trumpington |
| NAT 13 | Lynfield Lane | East Chesterton |
| NAT 14 | West Pit SSSI (Limekiln Caravan Club) | Cherry Hinton |
| NAT 15 | East Pit (South of Limekiln Close LNR) | Cherry Hinton |

CAMBRIDGE LOCAL PLAN TOWARDS 2031 – ISSUES AND OPTIONS 2, PART 2
DRAFT FOR DEVELOPMENT PLAN SCRUTINY SUB-COMMITTEE – 13 DECEMBER 2012

| | | |
|------------------------------------|---|-----------------|
| NAT 16 | Limekiln Hill Reservoirs | Cherry Hinton |
| NAT 17 | Madingley Rise Meadow | Castle |
| NAT 18 | Barton Road Lake | Newnham |
| NAT 19 | Meadow Triangle near Wilberforce Road and Cycle Way | Newnham |
| NAT 20 | Conduit Head Road Lake | Castle |
| NAT 22 | Adams Road Sanctuary (Lake) | Newnham |
| NAT 23 | M11 Verge and Scrub East of M11 | Newnham |
| NAT 24 | Traveller's Rest Pit (SSSI) | Castle |
| NAT 25 | Netherhall Farm Meadow | Queen Edith's |
| NAT 26 | Meadow & Small Wood (Peterhouse College) - South of Hayster Drive | Cherry Hinton |
| NAT 28 | Lakes Adjacent to Cherry Hinton Brook | Coleridge |
| NAT 29 | Emmanuel College Gardens | Market |
| NAT 30 | Barnwell East Local Nature Reserve | Abbey |
| NAT 31 | Barnwell West Local Nature Reserve | Abbey |
| NAT 32 | Hayster Drive Open Space | Cherry Hinton |
| NAT 33 | Empty Common (Copses and Pastures) | Trumpington |
| NAT 34 | Brookside | Trumpington |
| NAT 35 | The Grove | Newnham |
| NAT 36 | Giant's Grave | Cherry Hinton |
| NAT 37 | Former Landfill Site West of Norman Way | Cherry Hinton |
| NAT 38 | Former Landfill Site East of Norman Way | Cherry Hinton |
| NAT 39 | River Cam Residential Gardens | East Chesterton |
| NAT 40 | Disused Railway Line North of Ronald Rolph Court | Abbey |
| NAT 41 | Cobbetts Corner | Newnham |
| Parks and Gardens (P&G) | | |

CAMBRIDGE LOCAL PLAN TOWARDS 2031 – ISSUES AND OPTIONS 2, PART 2
DRAFT FOR DEVELOPMENT PLAN SCRUTINY SUB-COMMITTEE – 13 DECEMBER 2012

| | | |
|--------|--|-----------------|
| P&G 01 | Alexandra Gardens | Arbury |
| P&G 02 | Arbury Town Park | King's Hedges |
| P&G 03 | Cherry Hinton Hall | Cherry Hinton |
| P&G 04 | Cherry Hinton Recreation Ground | Cherry Hinton |
| P&G 05 | Chesterton Recreation Ground | East Chesterton |
| P&G 06 | Christ's Pieces | Market |
| P&G 07 | Coleridge Recreation Ground | Coleridge |
| P&G 08 | Histon Road Recreation Ground | Castle |
| P&G 09 | Jesus Green | Market |
| P&G 10 | King's Hedges Recreation Ground | King's Hedges |
| P&G 11 | Lammas Land | Newnham |
| P&G 12 | Midsummer Common | Market |
| P&G 13 | New Square | Market |
| P&G 14 | Nightingale Avenue Recreation Ground | Queen Edith's |
| P&G 15 | Nun's Way Recreation Ground | King's Hedges |
| P&G 16 | Parker's Piece | Market |
| P&G 17 | Bell School of Language | Queen Edith's |
| P&G 18 | Romsey Recreation Ground | Romsey |
| P&G 19 | St. Albans Road Recreation Ground | Arbury |
| P&G 20 | St. Matthew's Piece | Petersfield |
| P&G 21 | Trumpington Recreation Ground (King George V Memorial Playing Field) | Trumpington |
| P&G 22 | Coldhams Common | Abbey |
| P&G 23 | St John's College Gardens | Castle |
| P&G 24 | Cambridge University Observatory | Castle |
| P&G 25 | Edgecombe Flats Green | King's Hedges |

CAMBRIDGE LOCAL PLAN TOWARDS 2031 – ISSUES AND OPTIONS 2, PART 2
DRAFT FOR DEVELOPMENT PLAN SCRUTINY SUB-COMMITTEE – 13 DECEMBER 2012

| | | |
|--------|-------------------------------------|-----------------|
| P&G 26 | Church End Green Space | Cherry Hinton |
| P&G 27 | Cambridge University Botanic Garden | Trumpington |
| P&G 28 | Jubilee Gardens | Arbury |
| P&G 29 | Magdalene College Grounds | Castle |
| P&G 30 | Causeway Park | East Chesterton |
| P&G 31 | Queens' College | Newnham |
| P&G 32 | Trinity College Gardens | Castle |
| P&G 33 | Christ's College Gardens | Market |
| P&G 34 | Peterhouse Gardens | Market |
| P&G 35 | King's College | Newnham |
| P&G 36 | Pembroke College Gardens | Market |
| P&G 37 | Ridley Hall Grounds | Newnham |
| P&G 38 | Gonville and Caius Fellows Garden | Newnham |
| P&G 39 | Selwyn College Gardens | Newnham |
| P&G 40 | Newnham College Gardens | Newnham |
| P&G 41 | Wychfield | Castle |
| P&G 42 | Lucy Cavendish College | Castle |
| P&G 43 | Fitzwilliam College Gardens | Castle |
| P&G 44 | Murray Edwards College Gardens | Castle |
| P&G 45 | Castle Mound | Castle |
| P&G 46 | Homerton College Grounds | Queen Edith's |
| P&G 47 | St Edmund's College Gardens | Castle |
| P&G 48 | Trinity Hall Gardens | Castle |
| P&G 49 | Gonville & Caius College Gardens | Castle |
| P&G 50 | Clare College Gardens | Newnham |

CAMBRIDGE LOCAL PLAN TOWARDS 2031 – ISSUES AND OPTIONS 2, PART 2
DRAFT FOR DEVELOPMENT PLAN SCRUTINY SUB-COMMITTEE – 13 DECEMBER 2012

| | | |
|--|--|-----------------|
| P&G 51 | Anstey Hall | Trumpington |
| P&G 52 | Sidney Sussex College Gardens | Market |
| P&G 53 | Robinson College Gardens | Newnham |
| P&G 54 | Trinity College Fellows Garden | Castle |
| P&G 55 | Trinity College - Burrell's Field | Castle |
| P&G 56 | Corpus Christi | Market |
| P&G 57 | Clare Hall Scholars Garden | Newnham |
| Outdoor Sports Facilities (SPO) | | |
| SPO 01 | Barnwell Road Recreation Ground | Abbey |
| SPO 02 | Cambridge City Football Club | West Chesterton |
| SPO 03 | Cambridge Football Stadium | Trumpington |
| SPO 04 | Arbury County Primary School | West Chesterton |
| SPO 05 | Cambridge Rugby Football Club | Newnham |
| SPO 06 | Cambridge Tennis & Hockey Club | Newnham |
| SPO 07 | Cambridge United FC | Abbey |
| SPO 08 | Chesterton Community College | West Chesterton |
| SPO 10 | Churchill College Grounds | Castle |
| SPO 11 | Clare College Playing Fields | Trumpington |
| SPO 12 | Coleridge Community College Playing Fields | Coleridge |
| SPO 13 | Colville County Primary School | Cherry Hinton |
| SPO 14 | Corpus Christi Playing Fields | Newnham |
| SPO 15 | Cambridge University Press Playing Fields | Trumpington |
| SPO 16 | Emmanuel College Playing Field | Newnham |
| SPO 17 | Fawcett Primary School | Trumpington |
| SPO 18 | Fenners Cricket Ground | Petersfield |

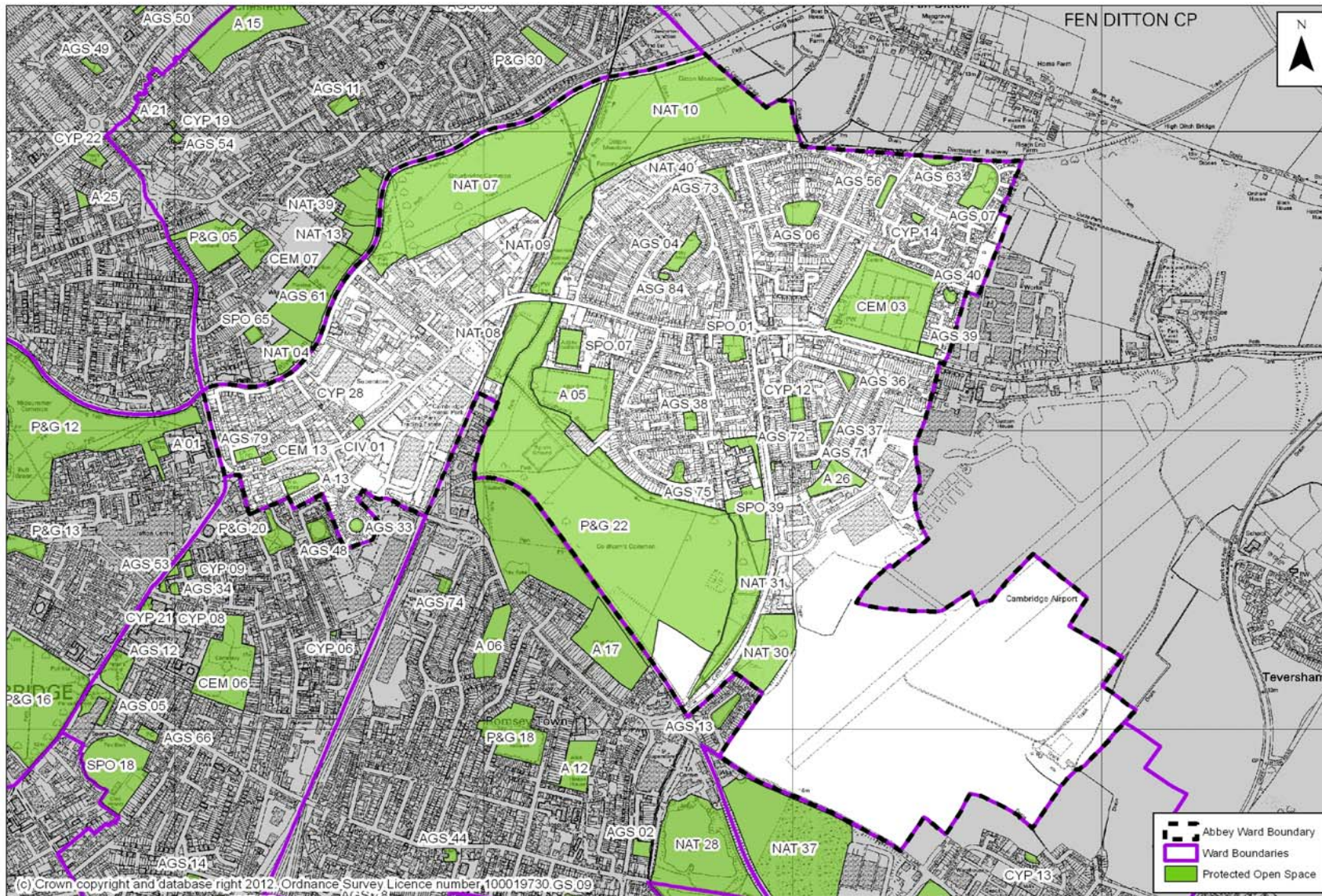
CAMBRIDGE LOCAL PLAN TOWARDS 2031 – ISSUES AND OPTIONS 2, PART 2
DRAFT FOR DEVELOPMENT PLAN SCRUTINY SUB-COMMITTEE – 13 DECEMBER 2012

| | | |
|--------|--|-----------------|
| SPO 19 | Fitzwilliam College Playing Fields | Castle |
| SPO 20 | Gonville & Caius College Playing Fields | Newnham |
| SPO 21 | Grove Primary School | King's Hedges |
| SPO 22 | Hills Road Sport Centre (Tennis Courts) | Queen Edith's |
| SPO 24 | Jesus College | Market |
| SPO 25 | King's Hedges County Primary School | King's Hedges |
| SPO 26 | Kings College School | Newnham |
| SPO 27 | Leys School Playing Field | Trumpington |
| SPO 28 | Leys & St Faiths Schools Playing Field | Trumpington |
| SPO 29 | Long Road Sixth Form College | Queen Edith's |
| SPO 30 | Manor Community College Playing Fields | King's Hedges |
| SPO 31 | Netherhall School (South) | Queen Edith's |
| SPO 32 | Queen Emma Primary School | Queen Edith's |
| SPO 33 | Newnham College Playing Field | Newnham |
| SPO 34 | Newnham Croft Primary School | Newnham |
| SPO 35 | Pembroke, Peterhouse, Downing, St. Catherine's & Christ's Colleges | Newnham |
| SPO 36 | Perse Preparatory School (Peterhouse College) | Trumpington |
| SPO 37 | Perse School For Boys Playing Field | Queen Edith's |
| SPO 38 | Perse School For Girls Playing Field | Trumpington |
| SPO 39 | Abbey Meadows Primary School | Abbey |
| SPO 40 | Queen Edith Primary School | Queen Edith's |
| SPO 41 | University Croquet & Tennis Club (Cocks & Hens Lawn Tennis Club) | Newnham |
| SPO 42 | Spinney County Primary School | Cherry Hinton |
| SPO 43 | St. Andrews Primary School | East Chesterton |

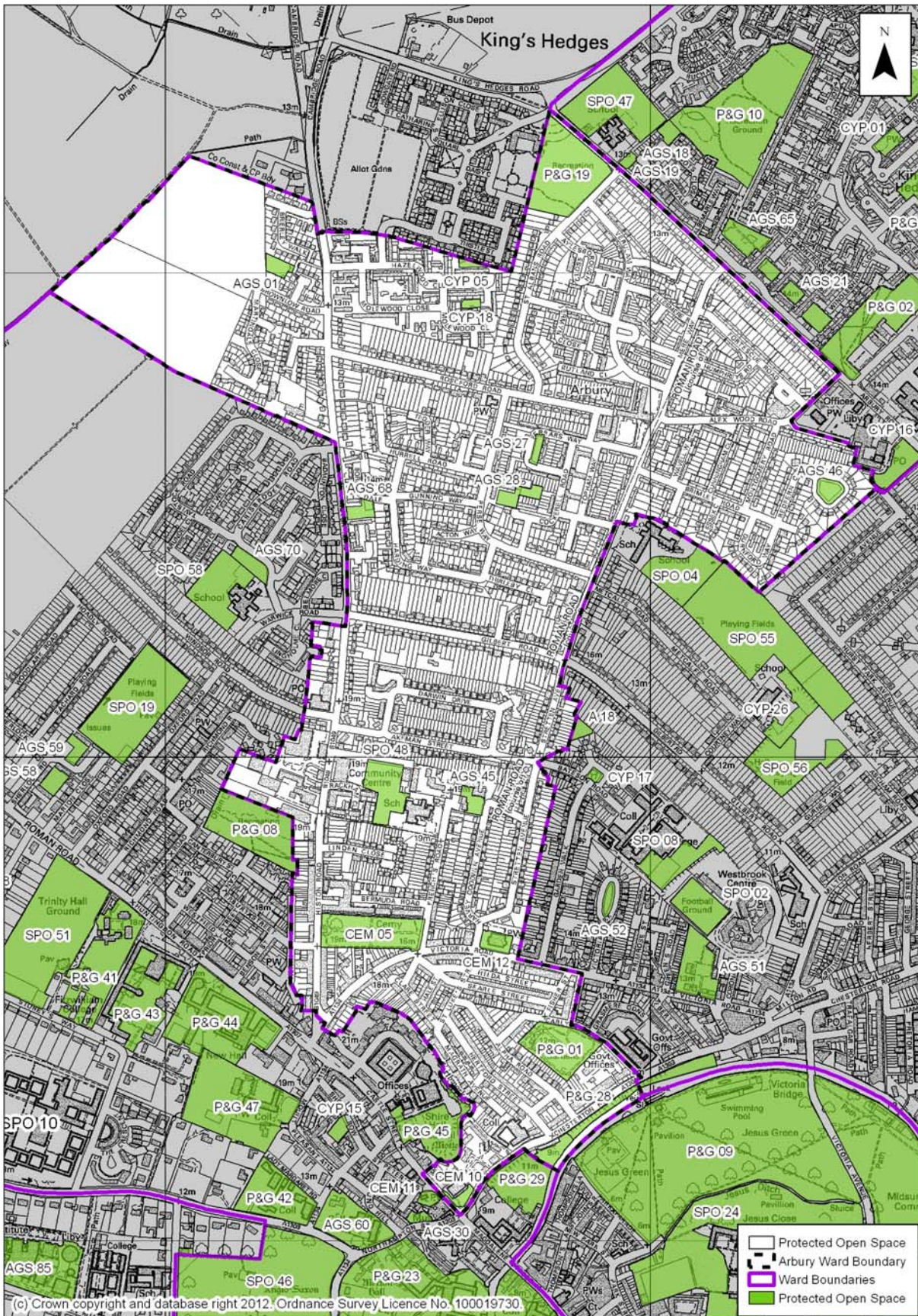
CAMBRIDGE LOCAL PLAN TOWARDS 2031 – ISSUES AND OPTIONS 2, PART 2
DRAFT FOR DEVELOPMENT PLAN SCRUTINY SUB-COMMITTEE – 13 DECEMBER 2012

| | | |
|--------|--|-----------------|
| SPO 44 | St Bede's School | Coleridge |
| SPO 45 | St Faith's Playing Field | Trumpington |
| SPO 46 | St John's and Magdalene Colleges Playing Field | Castle |
| SPO 47 | St Lawrence Catholic Primary School | King's Hedges |
| SPO 48 | St Luke's Primary School | Arbury |
| SPO 49 | St Mary's School Playing Field | Trumpington |
| SPO 50 | Trinity College Playing Field | Newnham |
| SPO 51 | Trinity Hall Ground | Castle |
| SPO 52 | University Athletics Track | Newnham |
| SPO 53 | University Rugby Club | Newnham |
| SPO 54 | University Rugby Club Practice Ground | Newnham |
| SPO 55 | Chesterton Community College Playing Field | West Chesterton |
| SPO 56 | Milton Road Primary School | West Chesterton |
| SPO 58 | Mayfield Primary School | Castle |
| SPO 59 | Cantabrian Rugby Football Grounds | Queen Edith's |
| SPO 60 | Cambridge Lakes Golf Course | Trumpington |
| SPO 61 | Cambridge & County Bowling Club | Trumpington |
| SPO 62 | Perse Preparatory School | Trumpington |
| SPO 63 | Downing College | Market |
| SPO 65 | Chesterton Bowls Club | East Chesterton |
| SPO 66 | Trinity College Hockey Field | Newnham |
| SPO 67 | Cherry Hinton Infants School | Cherry Hinton |

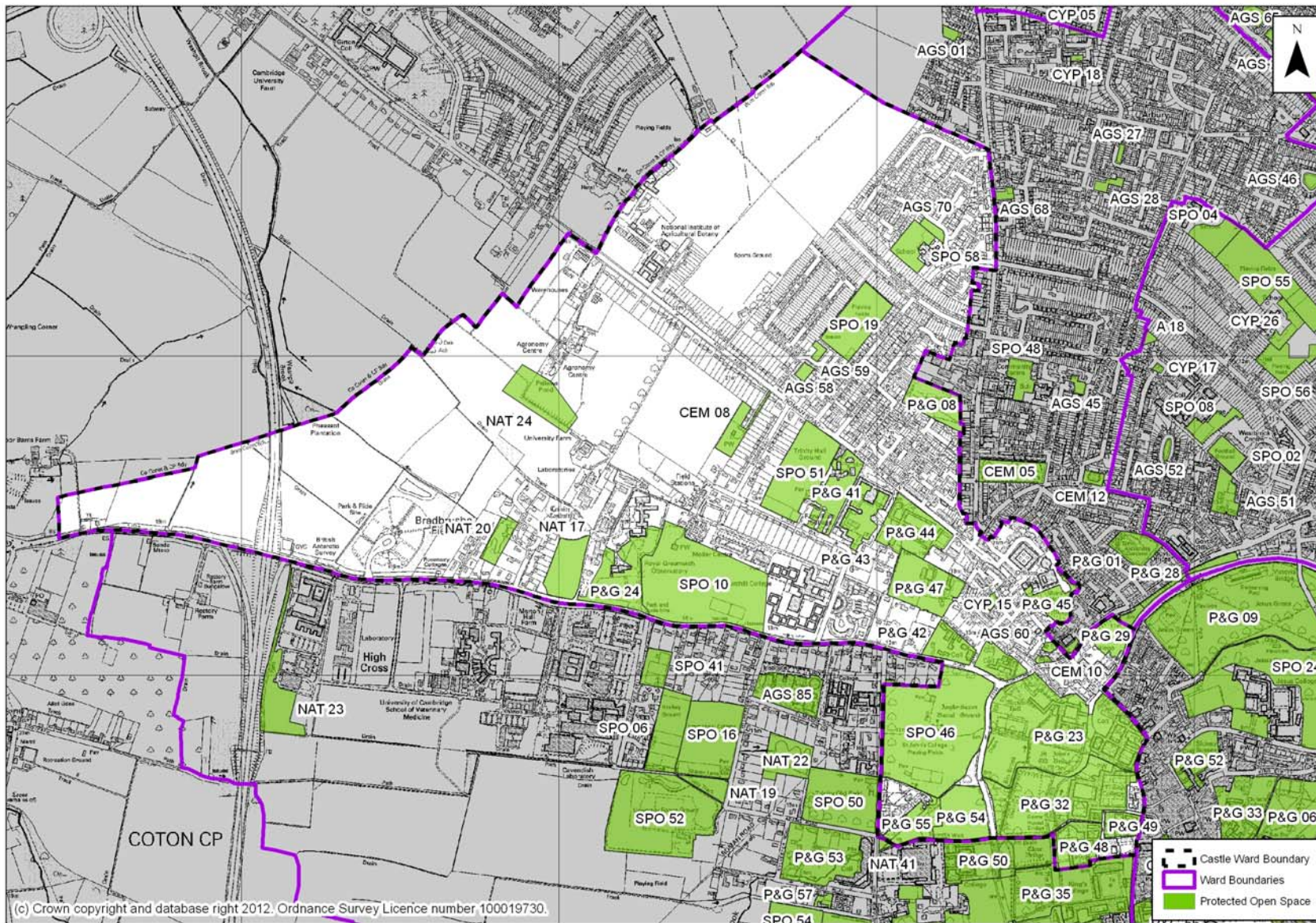
CAMBRIDGE LOCAL PLAN TOWARDS 2031 – ISSUES AND OPTIONS 2, PART 2
DRAFT FOR DEVELOPMENT PLAN SCRUTINY SUB-COMMITTEE – 13 DECEMBER 2012
Protected Open Space: Abbey Ward



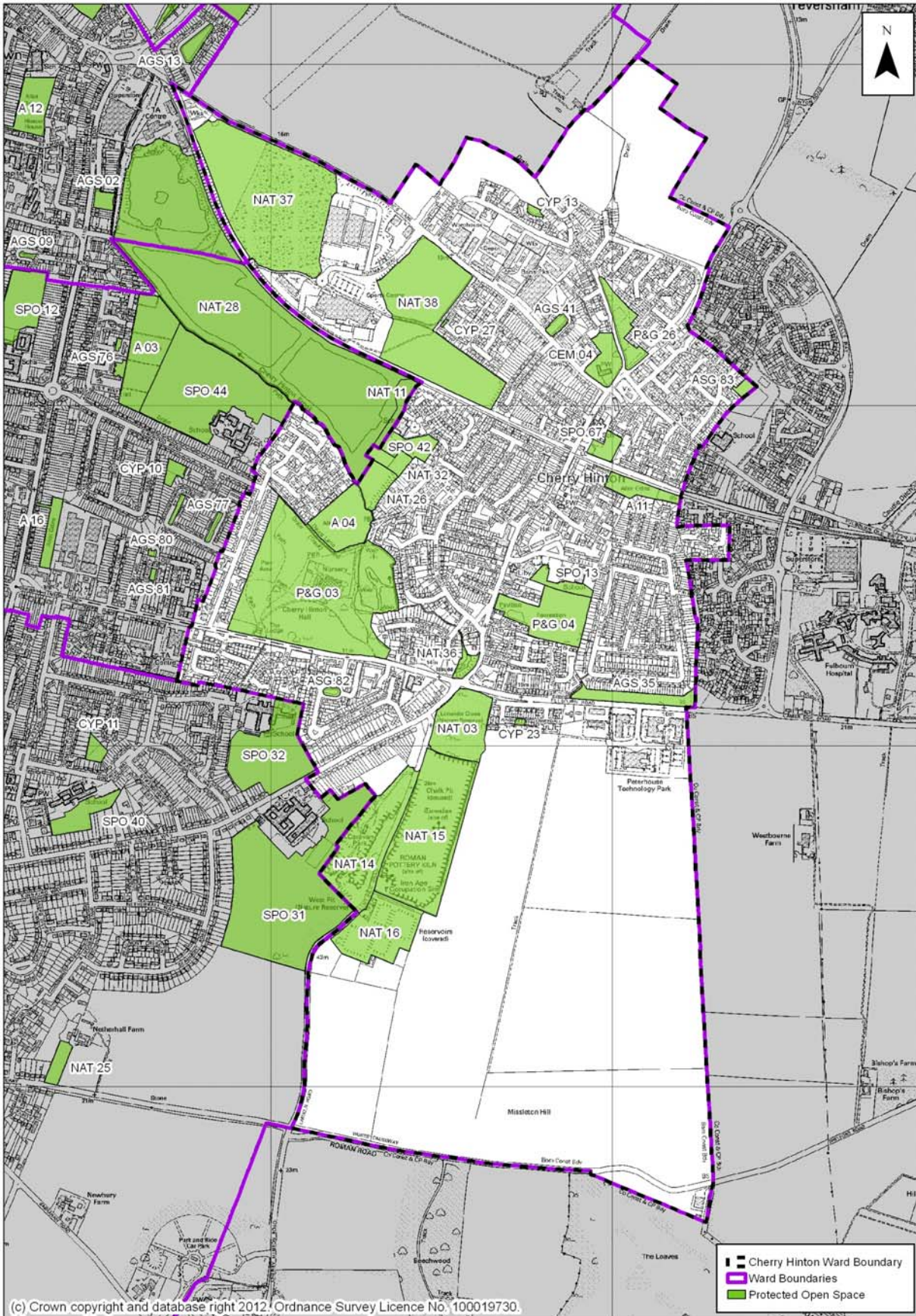
Protected Open Spaces: Arbury Ward



CAMBRIDGE LOCAL PLAN TOWARDS 2031 – ISSUES AND OPTIONS 2, PART 2
 DRAFT FOR DEVELOPMENT PLAN SCRUTINY SUB-COMMITTEE – 13 DECEMBER 2012
Protected Open Spaces: Castle Ward



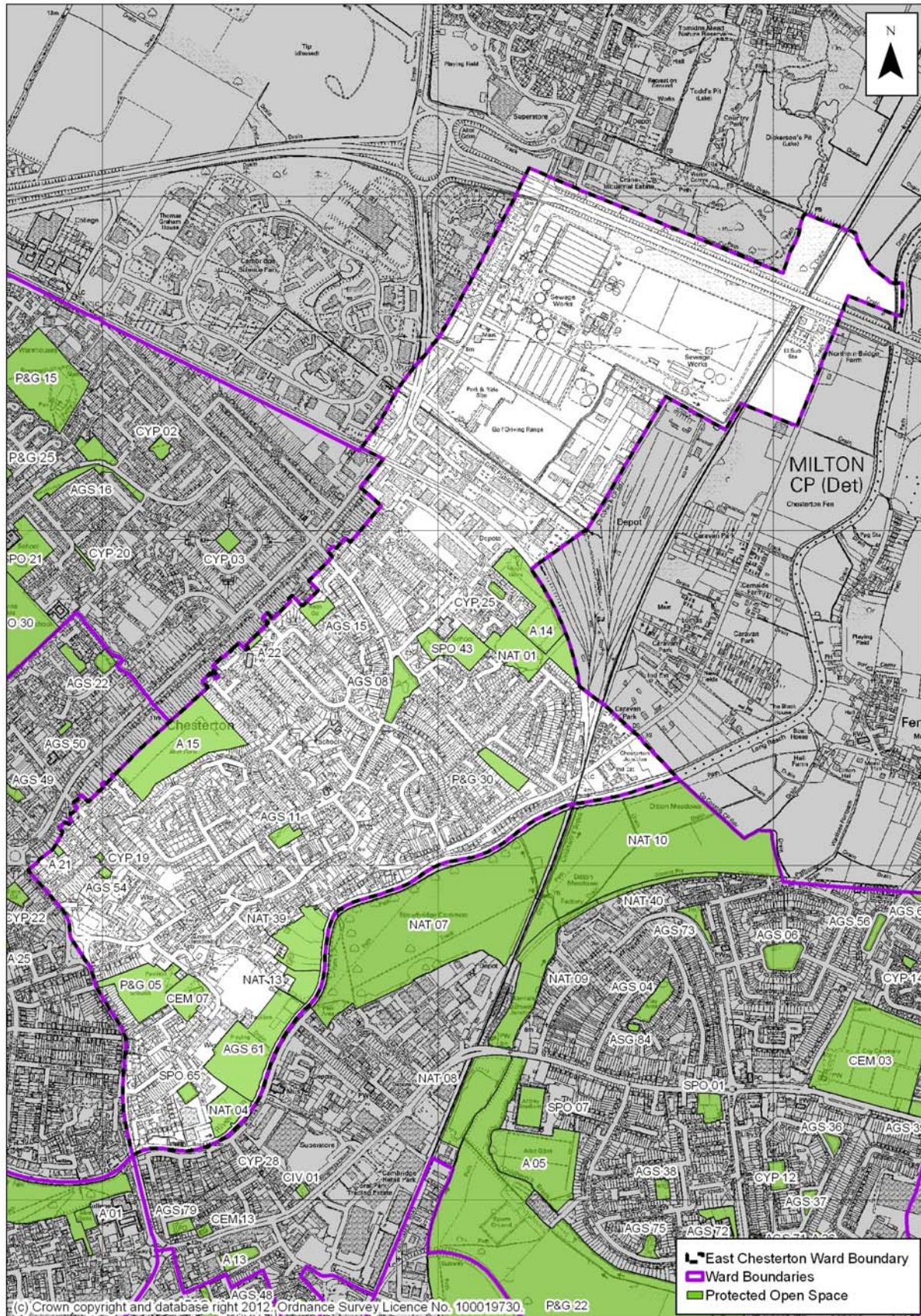
Protected Open Spaces: Cherry Hinton Ward



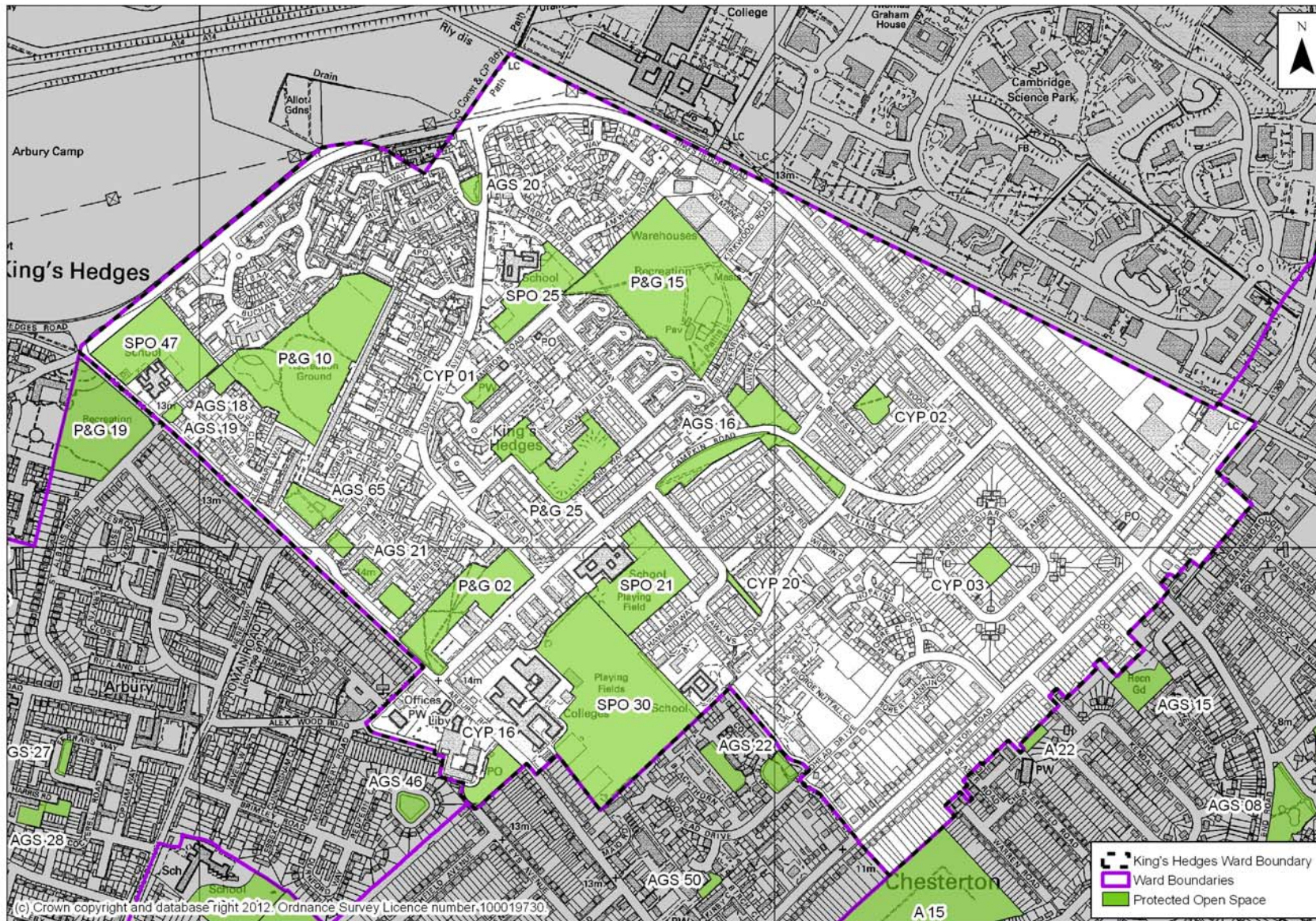
CAMBRIDGE LOCAL PLAN TOWARDS 2031 – ISSUES AND OPTIONS 2, PART 2
DRAFT FOR DEVELOPMENT PLAN SCRUTINY SUB-COMMITTEE – 13 DECEMBER 2012
Protected Open Spaces: Coleridge Ward



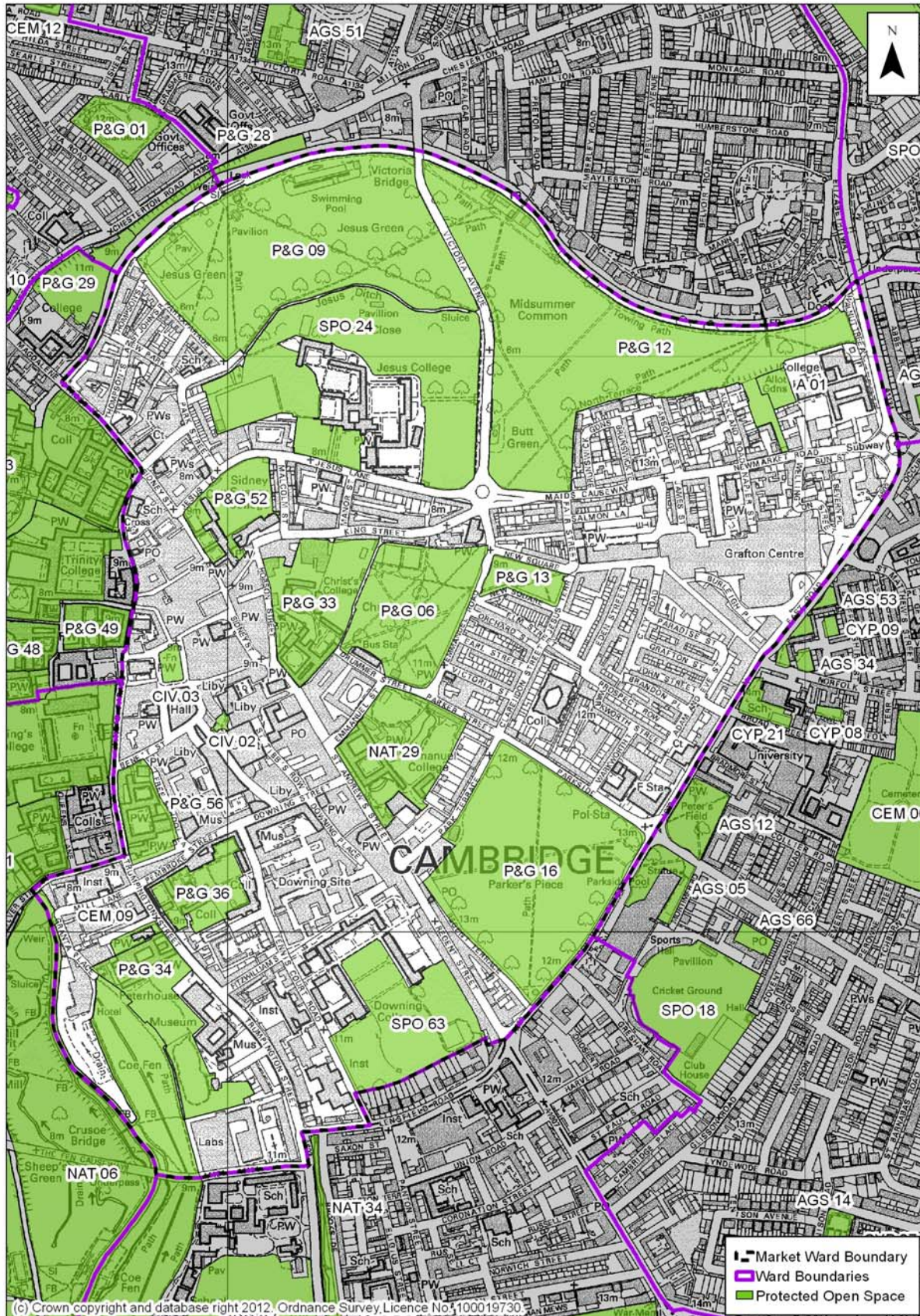
Protected Open Spaces: East Chesterton Ward



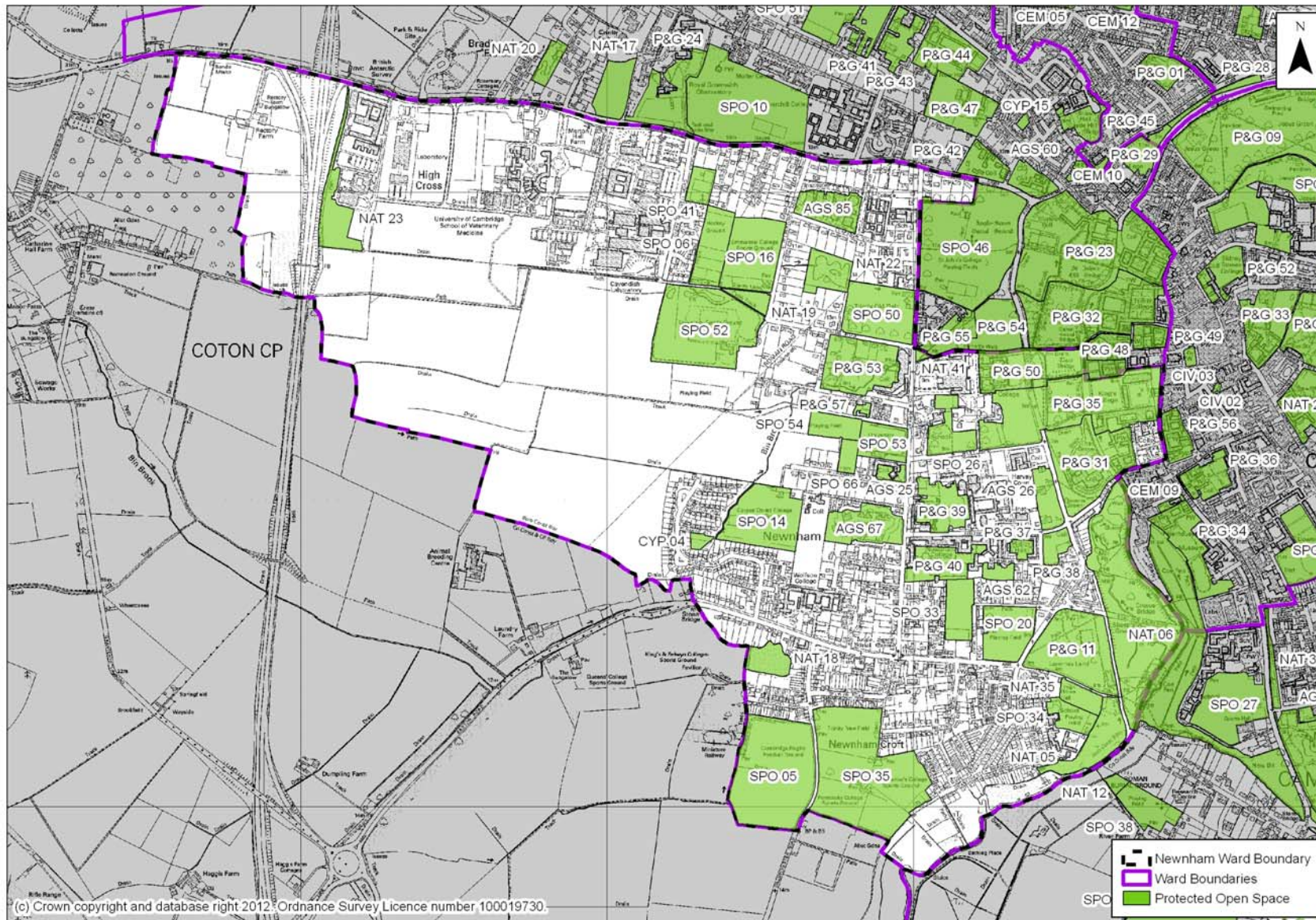
CAMBRIDGE LOCAL PLAN TOWARDS 2031 – ISSUES AND OPTIONS 2, PART 2
DRAFT FOR DEVELOPMENT PLAN SCRUTINY SUB-COMMITTEE – 13 DECEMBER 2012
Protected Open Spaces: King's Hedges Ward



Protected Open Spaces: Market Ward



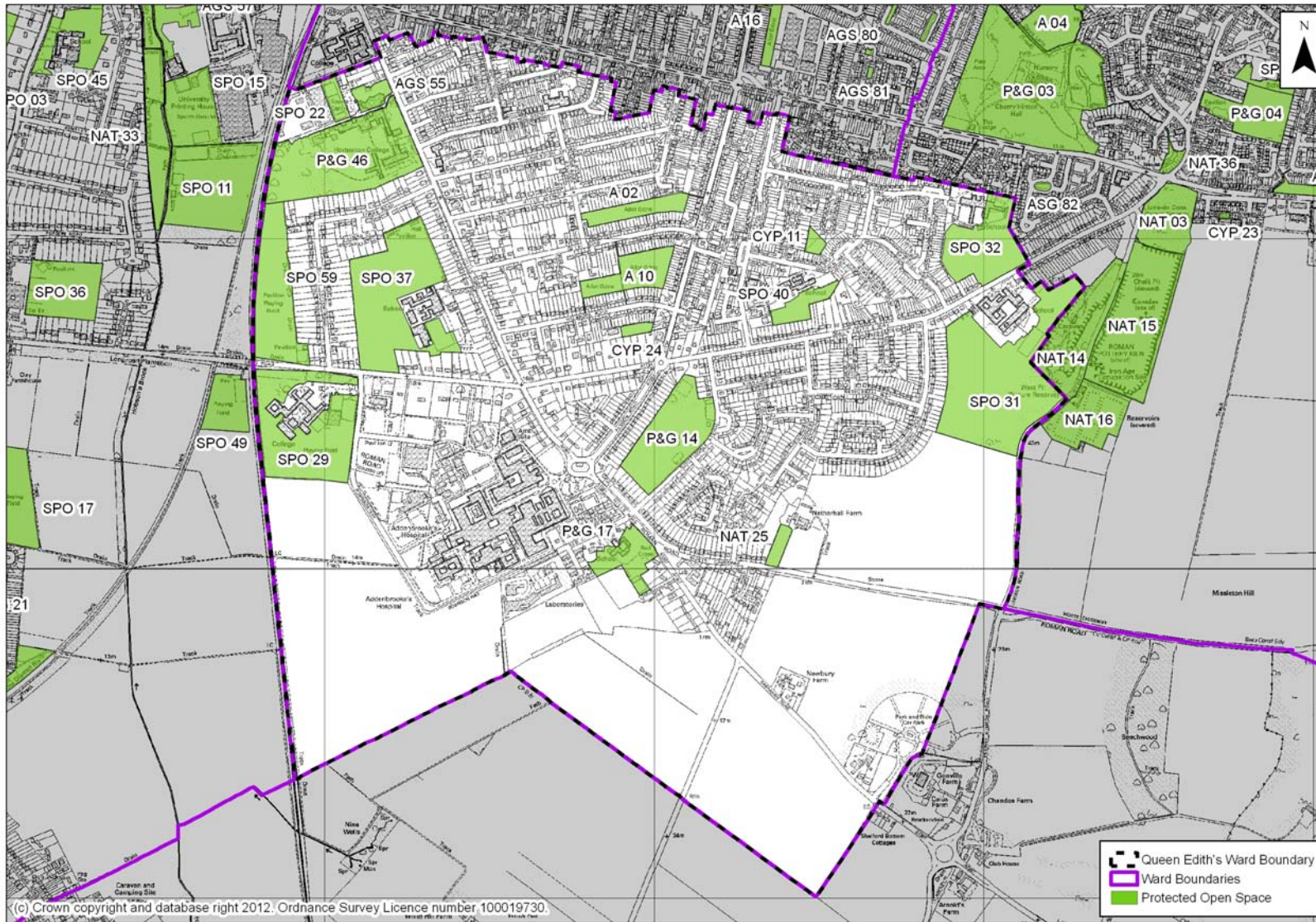
CAMBRIDGE LOCAL PLAN TOWARDS 2031 – ISSUES AND OPTIONS 2, PART 2
DRAFT FOR DEVELOPMENT PLAN SCRUTINY SUB-COMMITTEE – 13 DECEMBER 2012
Protected Open Spaces: Newnham Ward



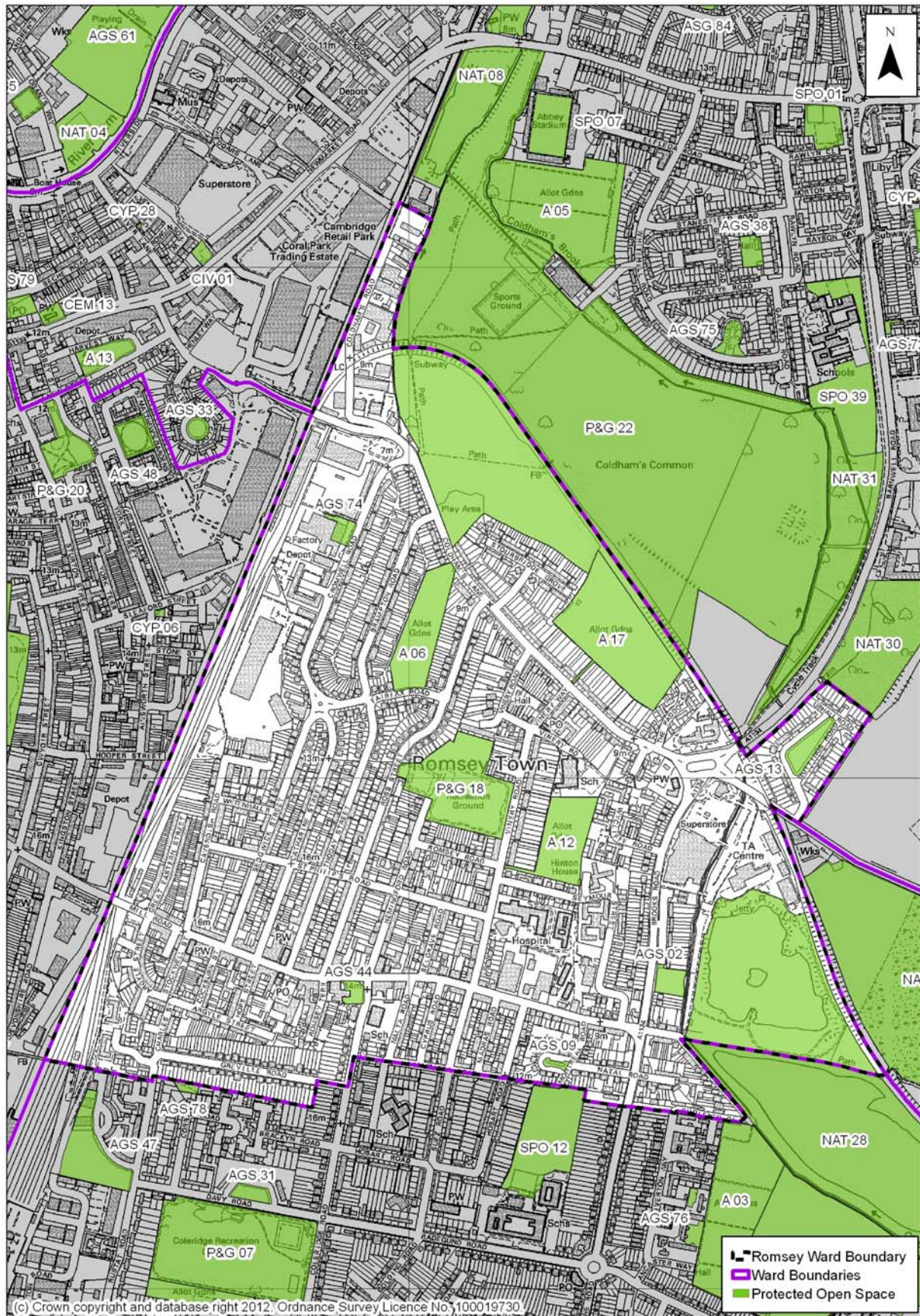
Protected Open Spaces: Petersfield Ward



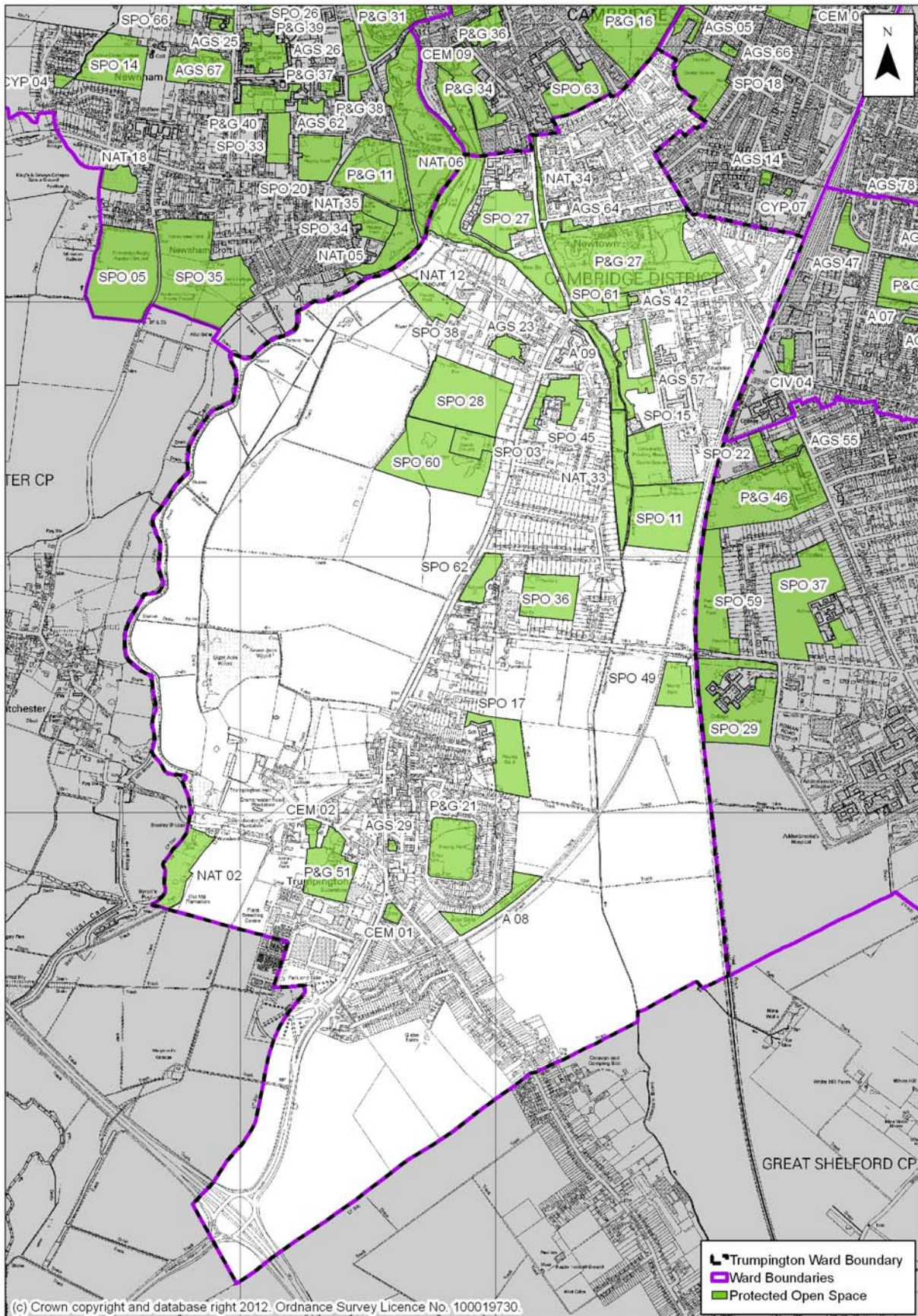
CAMBRIDGE LOCAL PLAN TOWARDS 2031 – ISSUES AND OPTIONS 2, PART 2
DRAFT FOR DEVELOPMENT PLAN SCRUTINY SUB-COMMITTEE – 13 DECEMBER 2012
Protected Open Spaces: Queen Edith's Ward



Protected Open Spaces: Romsey Ward



Protected Open Spaces: Trumpington Ward



Protected Open Spaces: West Chesterton Ward

